



**icmr**  
INDIAN COUNCIL  
OF  
MEDICAL  
RESEARCH

**NIN**

NATIONAL INSTITUTE  
OF NUTRITION

आई सी एम आर - राष्ट्रीय पोषण संस्थान  
स्वास्थ्य अनुसंधान विभाग, स्वास्थ्य और परिवार  
कल्याण मंत्रालय, भारत सरकार

ICMR – National Institute of Nutrition  
Department of Health Research, Ministry of Health  
and Family Welfare, Government of India

No.NIN/Maint/Q1/Amendment/2020

Date: 12.06.2020

### TENDER NOTICE

The Director, ICMR-National Institute of Nutrition, Tarnaka, Hyderabad invites sealed tenders till 26.06.2020 at 03.00 PM from reputed, experienced contractors/agencies with established experience and financial solvency to carry out the Structuring of Bio-Safety Level -3 Testing lab at ICMR-NIN. The details of the work are as follows:-

Sl. No	Description	Unit	Quantity	Amount
1.0	<b><u>CIVIL WORKS</u></b>			
1.1	<b>Wall panels</b>			
	Supply and Installation of double skin modular wall panels of below specifications 0.6 mm thick PCGI sheets on both sides, PUF with density 40Kg/m <sup>3</sup> +2 as infill, GI profiles all along the periphery, flush on both sides with gap filled with silicon sealant and placed on cold rolled galvanized bottom tracks			
1.1.1	50 mm thick wall panel	Sqm	65x3	
1.1.2	100 mm thick wall panel	Sqm	55	
1.2	<b>Exhaust Risers</b>			
	100 mm Thick Raiser Panels			
1.2.1	600 x 100 mm (2.45 Height of Raiser)	Nos	4	
1.2.2	750 x 100 mm (2.45 Height of Raiser)	Nos	4	
1.3	<b>Ceiling panels</b>			
	Supply and Installation of double skin modular wall panels of below specifications 0.6 mm thick PCGI sheets on both sides, PUF with density 40Kg/m <sup>3</sup> +2 as infill, GI profiles all along the periphery, flush on both sides with gap filled with silicon sealant and placed on cold rolled galvanized bottom tracks			
1.3.1	50 mm thick Ceiling Panel	Sqm	45x2	

Sl. No	Description	Unit	Quantity	Amount
1.4	<b>Supply and Installation of Doors with below mentioned specifications and sizes.</b>			
	46/50mm thick flush doors made of 0.8 mm thick powder coated (minimum 60 microns thickness) GPSP sheets on both sides, PUF as infill, 1.2 mm thick GPSP powder coated door frames, double glazed vision panel with 5 mm thick float glass on both sides, 3M make self adhesive tapes, silicon sealant, necessary hardware like SS304 ball bearing butt hinges, D- handles, 1mm thick SS304 push plates, Dorma / Dorset make door closure, mortice dead lock, concealed tower bolt in case of double leaf door, and provision to fix automatic door bottoms for all the doors.			
1.4.1	Single leaf door of size 900 mm x 2100 mm ht.	Nos.	13	
1.5	<b>Covings</b>			
1.5.1	Aluminum powder coated / anodized R-70 coving for all wall to wall and Wall to ceiling joints.	RMT	200x2	
1.5.2	Aluminium powder coated 3-dimensional internal /external corner coves.	Nos.	50 x2	
1.5.3	Aluminium powder coated 90 deg internal /external corner coves.	RMT	50 x2	

**Electrical and A/c**

Sl. No	Description	Unit	Quantity	Amount
2.0	<b>RECIRCULATION AIR HANDLING UNIT</b>			
	Modular Double skin floor mounted air handling unit made of 43mm thick PUF insulated panels (Thermal Break & internally coved extruded aluminum profiles) with 0.6mm thick pre painted / powder coated inner & outer skins comprising of mixing box with fresh air & return air dampers, filter section with flange type G4 , SS304 drain pan with , blower section with Nicotra / Kruger make DIDW fan, drive set with V- belts & taper lock pulleys set, vibration isolators, IE motor & blower section with on/off switches to operate from outside, limit switch for the fan section access door with a view port, fine filter section F7 type filters (inspection doors for all filter and fan sections) and damper at the outlet of unit. Ports to measure differential pressure across all filters & blower, provision for cooling coil			
2.1	<b>AHU-1: 1000 cfm @ 125 mm of WG SP</b>	No.	2	



Sl. No	Description	Unit	Quantity	Amount
2.2	<b>Treated fresh air unit</b>			
	Supply of Single skin ventilation unit made out of 18 gauge thick GI pre plastic /powder coated panels with aluminum hollow sections consisting of provision for pre-filter section to fix 10 micron filter, fan section with DIDW backward curved fan (Kruger/Nicotra) and suitable Non flame proof motor (CG/ABB/ Kirlosker), complete with anti-vibration mounts, provision for fixing of fine filters of 3 micron filters at discharge side, inlet and outlet connections. (Inspection doors for all filter and fan sections) and damper at the outlet of unit. Ports to measure differential pressure across all filters & blower.			
2.2.1	<b>Capacity: FAHU-1: 1800 cfm @ 130 mm WC; 17 TR</b>	No	1	
2.3	<b>EXHAUST VENTILATION UNITS</b>			
	Supply of Single skin exhaust ventilation unit made out of 18 gauge thick GI pre plastic /powder coated panels with aluminum hollow sections consisting of provision for Heater & fan section with DIDW forward curved fan (Kruger/ icotra) and suitable Non flame proof motor (CG/ABB/ Kirlosker), complete unit shall be mounted on anti vibration Mounts. (Inspection doors for Heater and fan sections) and damper at the outlet of unit.			
2.3.1	<b>Capacity: EHU-1: 1800 cfm @ 100 mm WC</b>	No	2	
2.4	<b>Bag in Bag Out HEPA filter</b>			
	Supply of Single skin Bag In/Bag Outside access filter housing assembly to accommodate HEPA filters with H13 HEPA Filters & 10 Micron (EU7) Filters of 90 % Efficiency. Capacity 1800 CFM	No	1	
2.5	<b>DUCTING &amp; INSULATION</b>			
	Factory /Site fabricated GI ducting using class VIII sheets / coil, galvanized hardware & supports, silicon sealant at all joints, TDF flanges for all the joints, bracing angles and minimum 3mm thick neoprene rubber gasket.			
2.5.1	24 Gauge	Sqmts	200x2	

Sl. No	Description	Unit	Quantity	Amount
2.6	Duct insulation with aluminium foil faced Class-O, XLPE/ IXPE material. Application of self-adhesive aluminum tapes for all longitudinal & transverse joints is part of the scope. Make: Supreme / K flex			
2.6.1	13 mm Thick (For Supply Duct)	Sqmts	100x2	
2.6.2	9 mm Thick (For Return Duct)	Sqmts	100x2	
2.7	<b>Supply and Return Modules AND DAMPERS</b>			
2.7.1	Supply of aluminium low leak volume control dampers for ducting branches.	Sqmts	1	
2.8	Supply of 18-gauge GI powder coated Supply Air module with provision to fix filter and grill. (Without filter)			
2.8.1	Size: 610 x 305 mm	Nos	8x2	
2.8.2	Return Module grill with provision for filter made of SS304 perforated grill	Nos	8x2	
2.9	<b>FILTERS</b>			
2.9.1	Supply of 20-micron filters of thickness 50mm (Flange type) made out of HDPE media having (Washable) efficiency 80% (For return Raiser)	Nos	8x2	
2.9.2	Supply of 0.3-micron HEPA filters of thickness 150 mm (Flange type) Normal flow with efficiency 99.997% (For Supply Modules). Size 600x300 mm	Nos	8x2	
2.10	<b>QUALIFICATION AND DOCUMENTATION</b>			
	Commissioning, Validation and Documentation i.e. Air Velocity test, pressure balancing, filter integrity, particle count, air flow pattern test and DQ/IQ/OQ/PQ.	Lot	1	



Sl. No	Description	Unit	Quantity	Amount
2.11	<b>ELECTRICAL PANEL</b>	Nos	1	
	Supply, Installation, Testing and Commissioning of 3phase and Neutral 440V, 4 wire Free Standing, Floor mounted LV panel made out of 2mm thick CRCA sheet after seven tank process and Epoxy powder coating. The panel shall consist of suitable rating TPN Aluminum bus bar (at the rating of 0.8A per Sq.mm) supported with DMC/ SMC barriers and color coded with Heat shrinkable sleeves. The Metering shall be provided as specified. The panel shall have Short circuit with standing capacity and consist of the switch gear as mentioned. The panel shall be got fabricated from manufacturers with CPRI Test certificate only. The Panels shall be mounted on ISMC-75. All Switchgear Ratings of Incoming and Outgoing feeders shall be as per specification and Approved Drawing., any civil works related mounting shall be under client scope.			
	a. HVAC requirement along with VFD for the control of the Exhaust, Ventilation and the recirculation AHU. b. Condensing unit and the Heaters interlocking			
	<b>Total</b>			

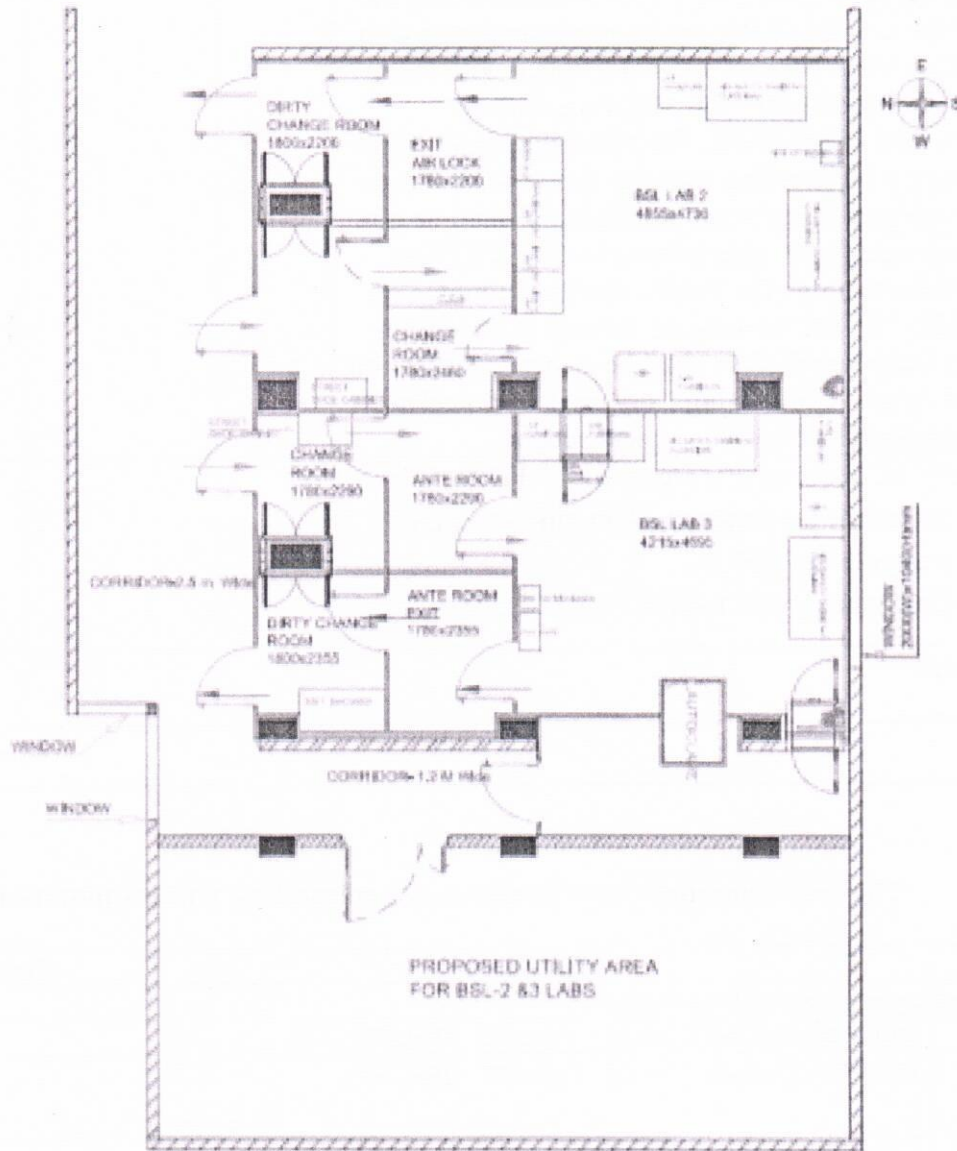
In words: -----

**The following items may be given as a standalone tender/quotation**

S.No.	Itmes	Quantity
<b>Mandatory to be given with quotation</b>		
1	Biosafety Cabinet Class II - Type-A2 (BSL-II)	2
2	Biosafety Cabinet Class II- Type-B2 (BSC-III)	2
3	Drop Boxes	2
4	Stainless steel sink	2
<b>Optional</b>		
4	Stainless steel lab furniture (or washable material)	3
5	MS PC lab furniture	5
6	-80°C deep freezers	2
7	-20°C deep freezers	2

ICMR-NIN Proto-type BSL-2/BSL-3 layout\*

Amendment Tender No. \_\_\_\_\_



\*NOTE: This is a basic layout with available civil (physical) structure. Black shaded areas indicate position of concrete columns. It cannot be changed. The best design tender proposed to fit above physical area will be considered.


# The designs and facility must adhere to norms of National/International regulatory Authorities.



### “Terms and conditions”

1. The sealed cover should be super- scribed “Construction of Bio-Safety Level II / III Testing lab at ICMR-NIN”.
2. Water and Electricity points will be provided by NIN, Hyderabad to the contractor.
3. It is the responsibility of the contractor to visit the site before submitting their offer/quotation, for which the bidder may contact Technical Officer (C) at 040-27197226/312 on all working days i.e. Monday to Friday except public holidays from 09.00 AM to 05.30 PM.
4. The Tender form should be collected from the Maintenance Office on payment of Rs 500 which is non refundable from 12.06.2020 onwards. The tender fee of Rs.500/- may be obtained in the form of DD and the DD may be scanned and sent to the maintenance office-mail Id : [mainninhyd@gmail.com](mailto:mainninhyd@gmail.com). The above DD should be put in the Technical cover without fail otherwise the offer will be invalid. Further, once the copy of the DD is uploaded to the E-mail from which the DD has been sent.
5. The quotation should be addressed to “The Director, National Institute of Nutrition, Hyderabad “and should be dropped in the sealed box in the Maintenance division, if it is by hand.
6. The offer/quotation in sealed cover should reach the undersigned **by 3.00 PM on or before 26.06.2020 along with EMD @ 10%** of the value of contract amount as Demand Draft on any nationalized bank and drawn in favour of Director NIN, Hyderabad. The offer/quotation received thereafter will not be considered. NIN, Hyderabad is not responsible for postal delay. No quotations will be accepted on E-Mail / FAX. Any defect in the work has to be rectified free of cost by the contractor within one year from the date of completion of the work. The EMD amount will be refunded after the said period.
7. The Price of the contract amount should be written both in figures and words. The quotations should be valid for minimum of 90 days.
8. The tender should contain full technical specifications supported by necessary detailed drawings.
9. EMD will be liable to be forfeited, if the, tenderer withdraws amends impairs / derogates from the tender in any respect within the validity period.
10. The Technical / Price bids should be submitted in a separate sealed cover and both the envelopes put together in another cover which should also be wax sealed.
11. The Technical / Price bids should be super-scribed with tender reference number and name of the work.

12. The Technical bid will be invalid, if it is not accompanied with the copy of Demand Draft of EMD blocking the amount.
13. Wherever possible price breakup of components for undertaking of the work should be given.
14. The Technical bids will be opened on **30.06.2020 at 10.30 AM in the Assembly hall** of the Institute. The bidders are requested to get identification of proof for verification.
15. The date of price bid opening will be intimated to the qualified bidder only at a later date. It is mandatory to submit e-mail ID / Mobile number. At the time of opening of the price bid, the qualified bidder is required to get the identity proof for verification.
16. The Director, NIN, Hyderabad has the right to accept or reject any quotation(s) without assigning any reasons.
17. **Period of completion:** The work shall be completed within 8 weeks from the date of award of the work. The essence of the tender is a turnkey job.
18. The labour engaged and working equipment brought by the contractor for the work shall be recorded in the NIN Security Gate before entering into the premises and obtain necessary gate pass.
19. Payment will be made against the bill along with a statement of measurement taken in the presence of the contractor and the Civil Engineer of NIN, Hyderabad.
20. The bill will be settled only after the satisfactory report received from the BSL - III team of NIN for the work done by the Contractor.
21. The contractor/bidder should submit certified copies of company profile along with Financial Capacity, Registration, Income Tax, GST and complete Bank details along with Technical bid.
22. Bidder should enclose the previous work / Installation satisfactory reports of BSL-III facility with complete address and contact person in detail with mobile number for reference.
23. The NIN, Hyderabad is not responsible for any damage caused to the labour/manpower engaged by the contractor during the execution of the work.
24. NIN, Hyderabad is not responsible for payment of wages to the manpower engaged by the contractor and statutory dues for the work at NIN.
25. Director, NIN, Hyderabad reserves the right to increase/decrease the quantity of work.

  
12/6/2020  
Technical Officer -C  
Maintenance Department  
For Director